

# MONTHLY MEMBERSHIP PROGRESS REPORT

LOCATION PAKISTAN

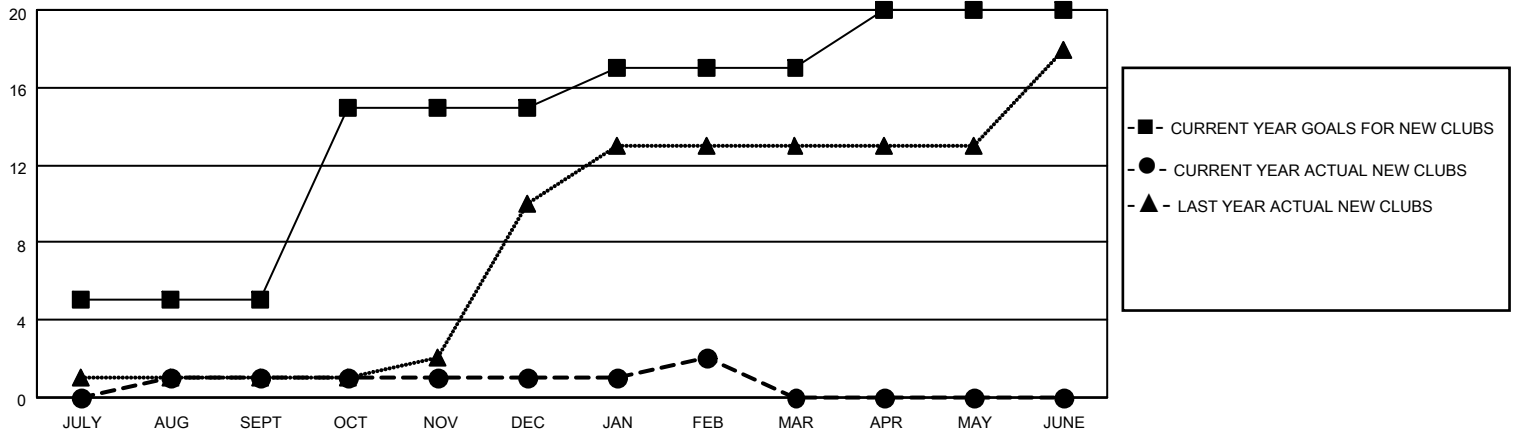
District 305 S

Results as of: 2/28/2022

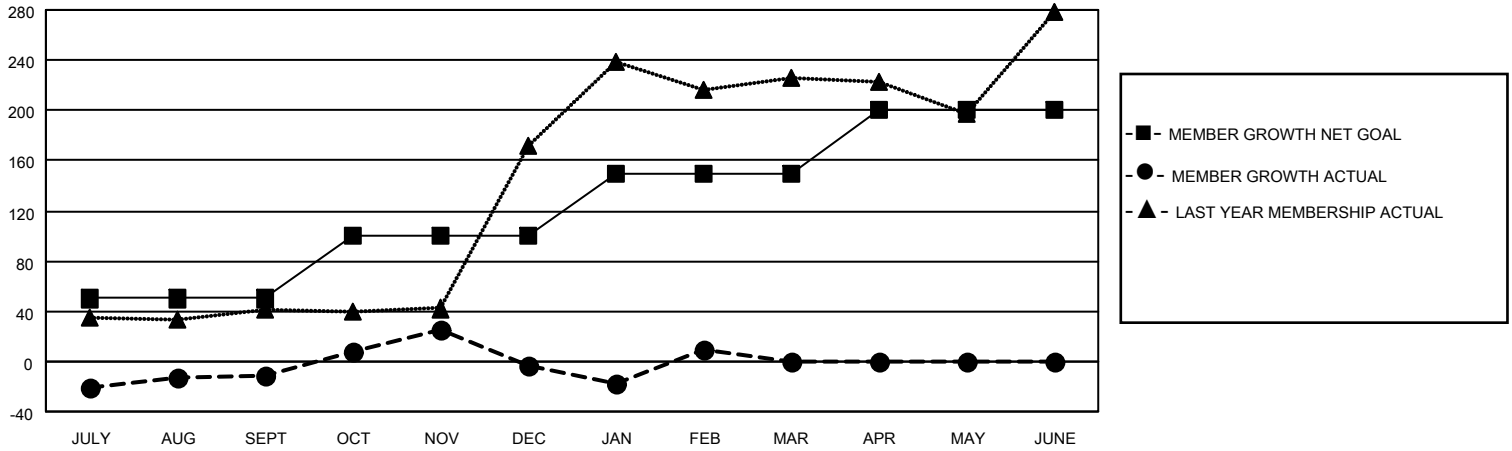
Clubs			
RESULTS FOR 2021-2022			
QUARTER	NEW CLUB GOAL	NEW CLUBS	DROPPED CLUBS
JULY/AUG/SEPT	5	1	3
OCT/NOV/DEC	10	0	1
JAN/FEB/MAR	2	1	1
APR/MAY/JUNE	3	0	0

Members			
RESULTS FOR 2021-2022			
QUARTER	MEMBER GROWTH NET GOAL	MEMBER GROWTH ACTUAL	DROPPED MEMBERS ACTUAL (including transfers)
JULY/AUG/SEPT	50	38	48
OCT/NOV/DEC	50	74	64
JAN/FEB/MAR	50	51	31
APR/MAY/JUNE	50	0	0

**GOALS AND ACTUAL NEW CLUBS CUMULATIVE**



**GOALS AND ACTUAL MEMBERS CUMULATIVE**



**DROPPED CLUBS: 5**

**31 CLUBS OF 102 ADDED 1 OR MORE NEW MEMBERS**

**GENDER DISTRIBUTION**

MALE	1,206 (71.66%)
FEMALE	477 (28.34%)
NON BINARY	0 (0.00%)
PREFER NOT TO ANSWER	0 (0.00%)

**DROPPED MEMBERS**

[CLICK HERE FOR CUMULATIVE MEMBERSHIP DATA](#)

DECEASED	8
CLUB CANCELLED	51
OTHER	84
<b>TOTAL</b>	<b>143</b>

TOTAL FAMILY UNIT MEMBERS 1,257

FAMILY MEMBERS PAYING HALF DUES 953